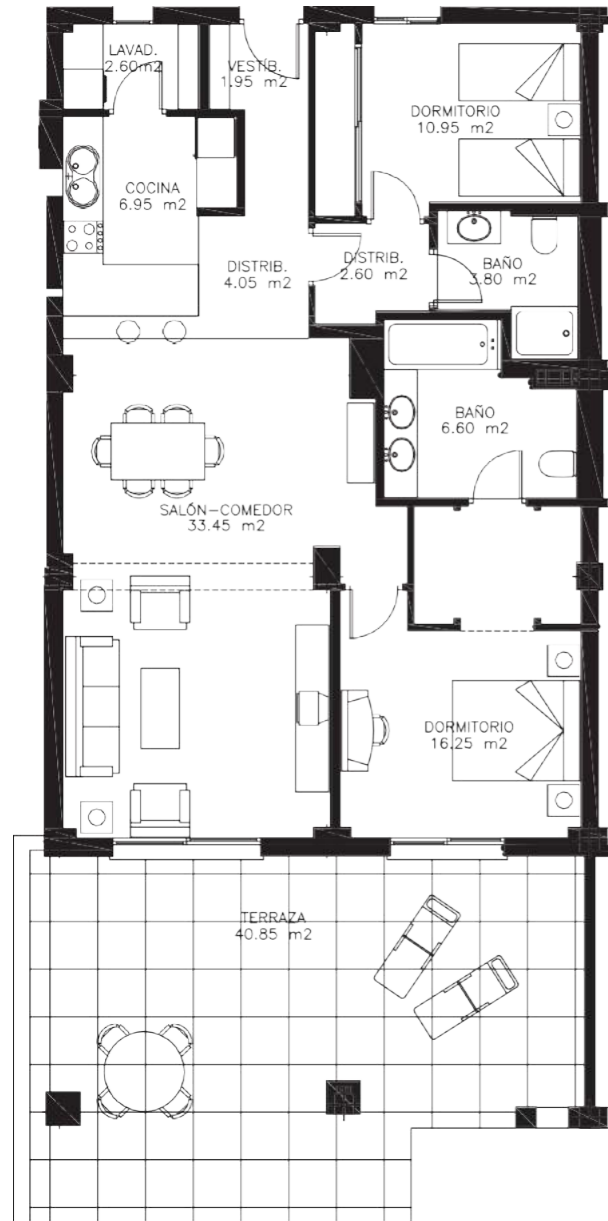
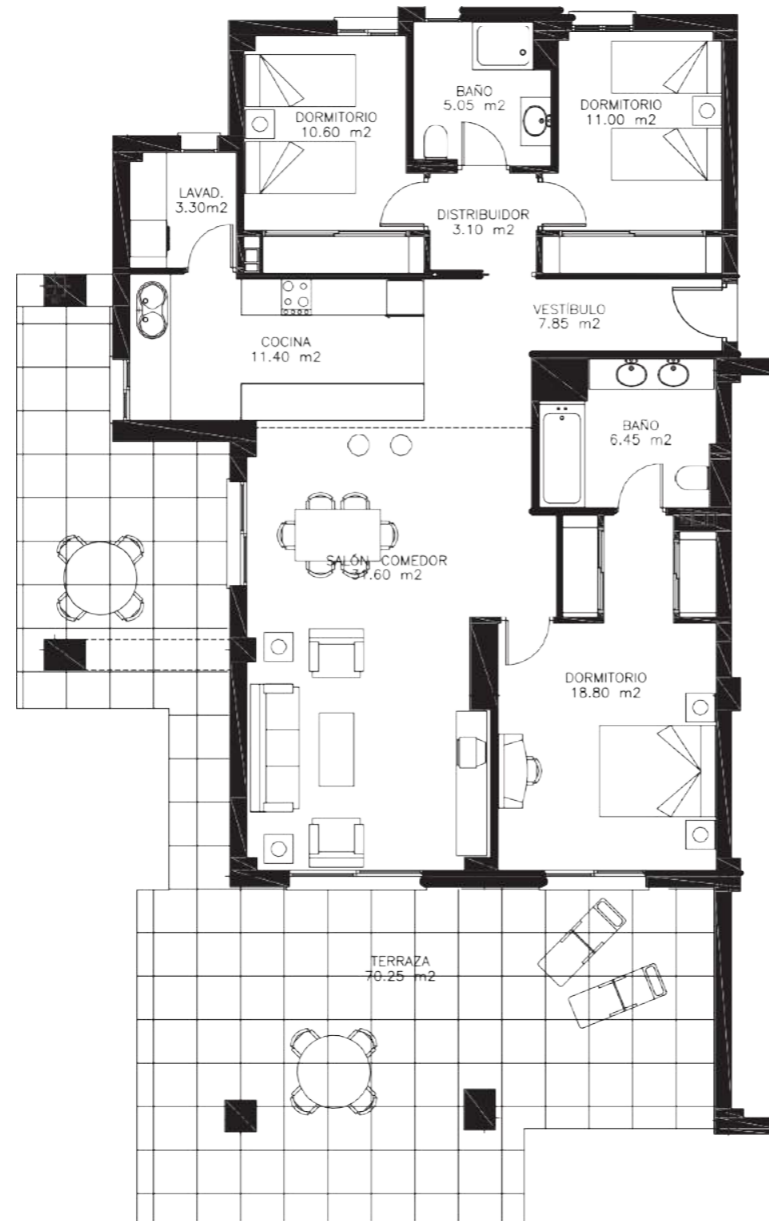


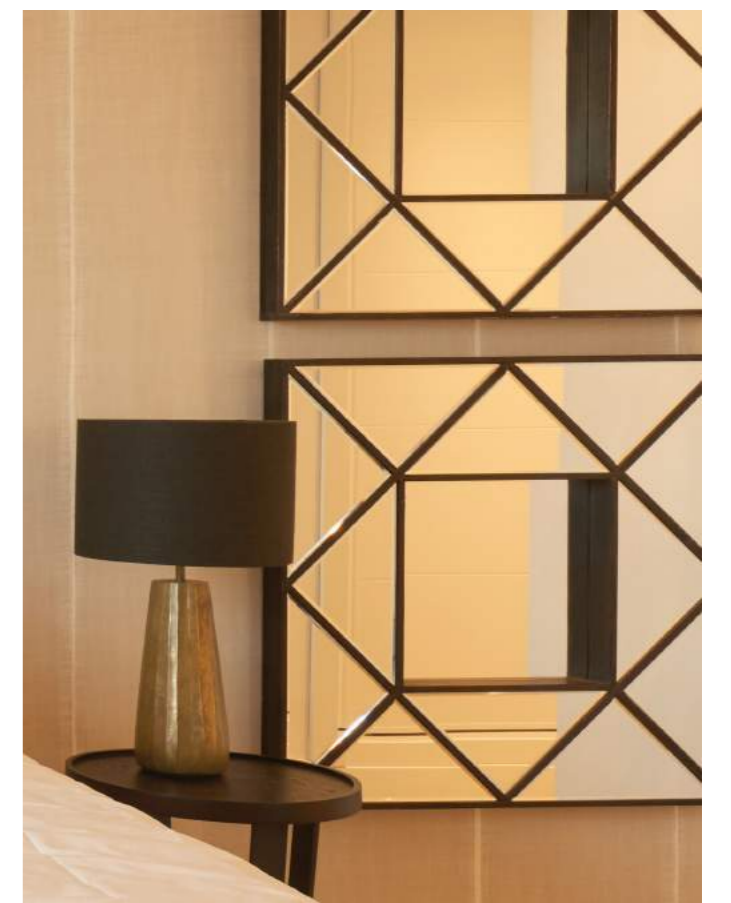
CENTRAL | 2 BEDROOM



CORNER | 3 BEDROOM



B E N A H A V I S



WELCOME TO 22 BY QUARTIERS

22 by Quartiers is a new development located in the beautiful hills of Benahavis, just a ten-minute drive from Puerto Banus. The development comprises 2 and 3 bedroom apartments with excellent south facing positioning. A haven of complete serenity and calm with commanding country, sea, and mountain views as well as acres of unspoiled land stretching out around you.

The design of 22 by Quartiers is a departure from the conventional contemporary, with warm finishes and Andalusian design yet to the highest modern standards. The use of wooden floors and tiles provides a sophisticated elegance with a nod to the classic hacienda style.

The accommodation includes an entrance hall with cloak room. You are led up to a stunning living room with spacious sea-facing sun terraces and an open plan kitchen with a centre-island, serving as a breakfast area too. The kitchen is modern and light with practical storage and quality finishing in classic design. All appliances are by Gaggenau, offering incomparable technology and innovation.

The bedrooms have been designed to provide a peaceful setting, offering perfect tranquil views. Decorated in soft tones and with Mediterranean furniture and built-in wardrobes, the master bedroom offers direct access to the terrace and side views of the sea, opening up to a large terrace area allowing views of the whole property at once. The second bedroom has a balcony and separate bathroom. Both bathrooms are immaculate and the en-suite master bathroom offers both shower and bath with ceramic fittings to create a delightful and functional space that will accommodate every need.

Air conditioning hot/cold. Underground garage space and a large storage room are also included. 24-hour security within a gated complex and a privileged position enjoying complete privacy,



PROPERTY HIGHLIGHTS

Elegant apartment

Ideally located 10 minutes away from Puerto Banus

24 Hour security

A/C hot and cold

Wooden floors

Fully fitted kitchen with Gaggenau appliances

4 Communal swimming pool + 2 for children

Recreational area with direct access to swimming pool

1 Garage space and storage room

SPECIFICATIONS

Ref	Example Central 2 Bedroom	Ref	Example Corner 3 Bedroom
Bedrooms	2	Bedrooms	3
Bathrooms	2	Bathrooms	2
En-Suite Bathrooms	1	En-Suite Bathrooms	1
Built	95m ²	Built	118m ²
Terrace	44m ²	Terrace	78m ²
Pool	Communal	Pool	Communal
Garden	Communal	Garden	Communal
Garage	Private	Garage	Private
EPC	EPC	EPC	EPC